

Green Hill Solar Farm

EN010170

Environmental Statement

Appendix 12.2: Archaeological Desk-

Based Assessments

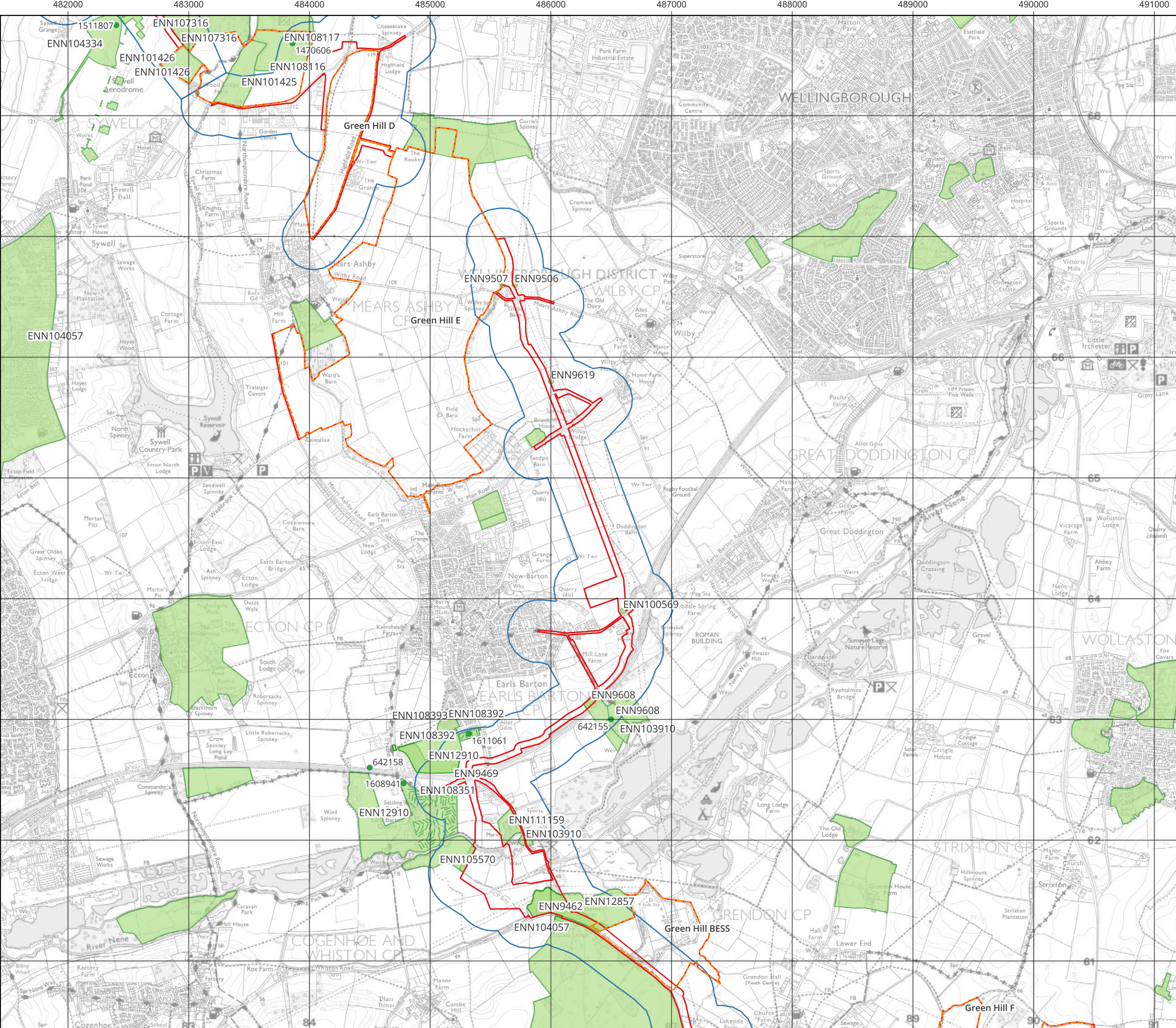
(Part 7 of 7)

Prepared by: Lanpro

Date: May 2025

Document Reference: APP/GH6.3.12.2

APFP Regulation 5(2)(a)



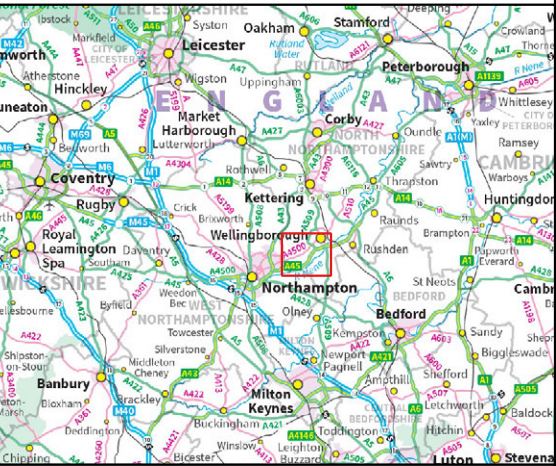
**Green Hill Solar Farm
Cable Route Corridor**

Archaeological Desk-based Assessment

Title:
Figure 7. Section 2 of the study site with the location of NRHE and HER 'event' records

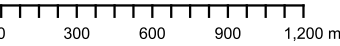
- Legend:
- Study site
 - Search Area
 - Proposed Solar site
 - HER 'event' point
 - HER 'event' line
 - HER 'event' area
 - NRHE 'event' point

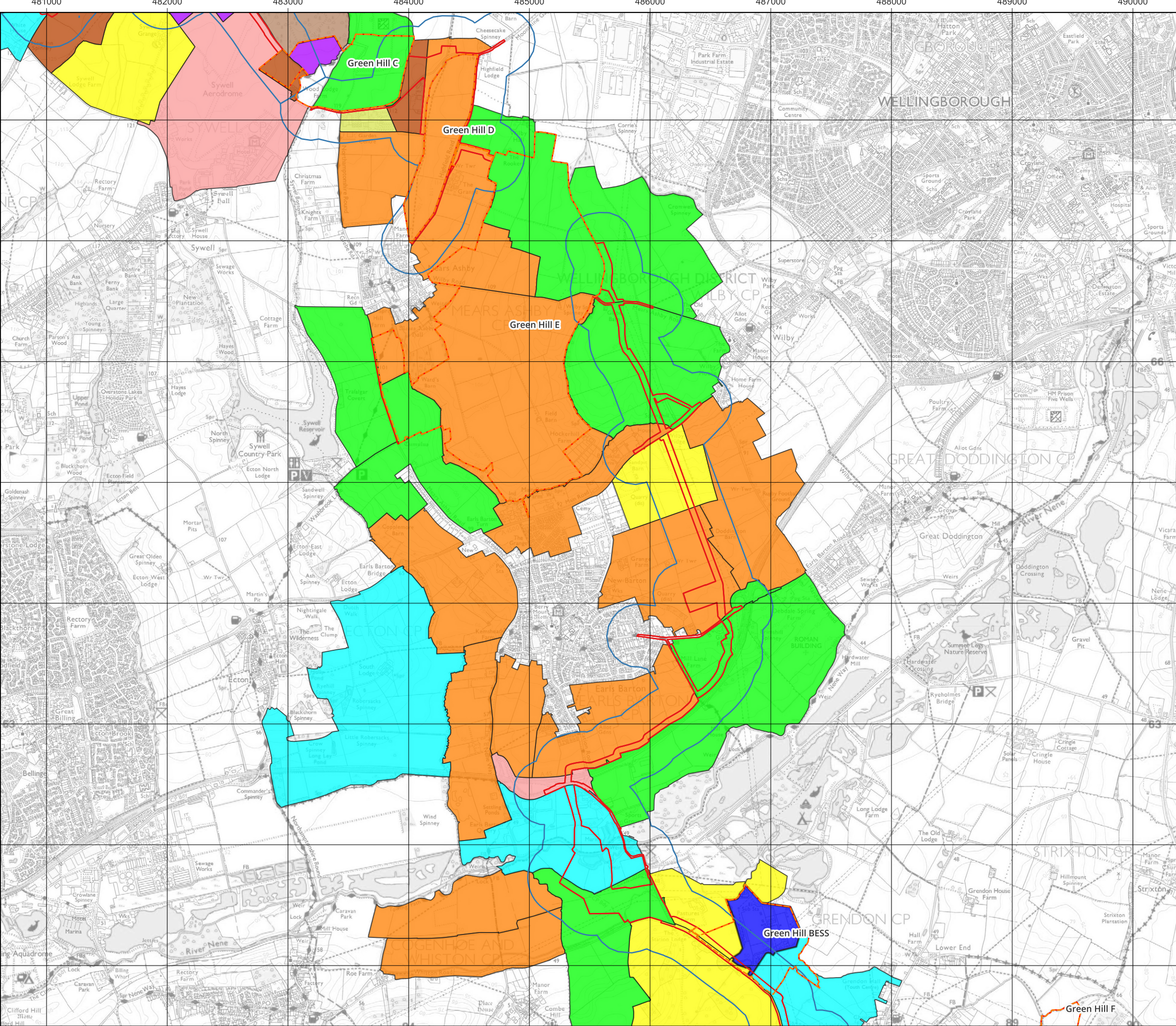
Data: © Northamptonshire Archives & Heritage Service, 2025; Lanpro, 2025; IGP, 2025
Base Maps: © Crown copyright and database rights 2025. Ordnance Survey



Co-ordinate system: OSGB36 / British National Grid

Scale: 1:30000 @ A3





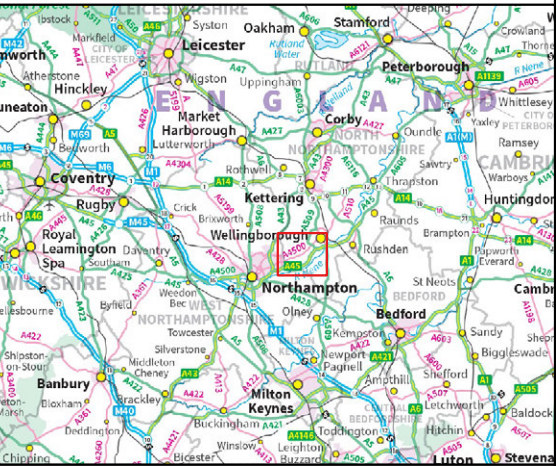
Green Hill Solar Farm Cable Route Corridor

Archaeological Desk-based Assessment

Title:
Figure 8. Section 2 of the study site with the
Northamptonshire HLC 'broad types'

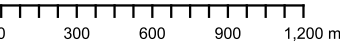
- Legend:
- Study site
 - Search Area
 - Proposed Solar site
 - HLC
 - Settlement
 - Earlier parliamentary enclosure
 - Large modern fields
 - Modern fields
 - Pre 19th century non parliamentary enclosure
 - Ancient Woodland
 - 20th century communication
 - Fragmented Modern Fields/Civic
 - 19th century parliamentary enclosure

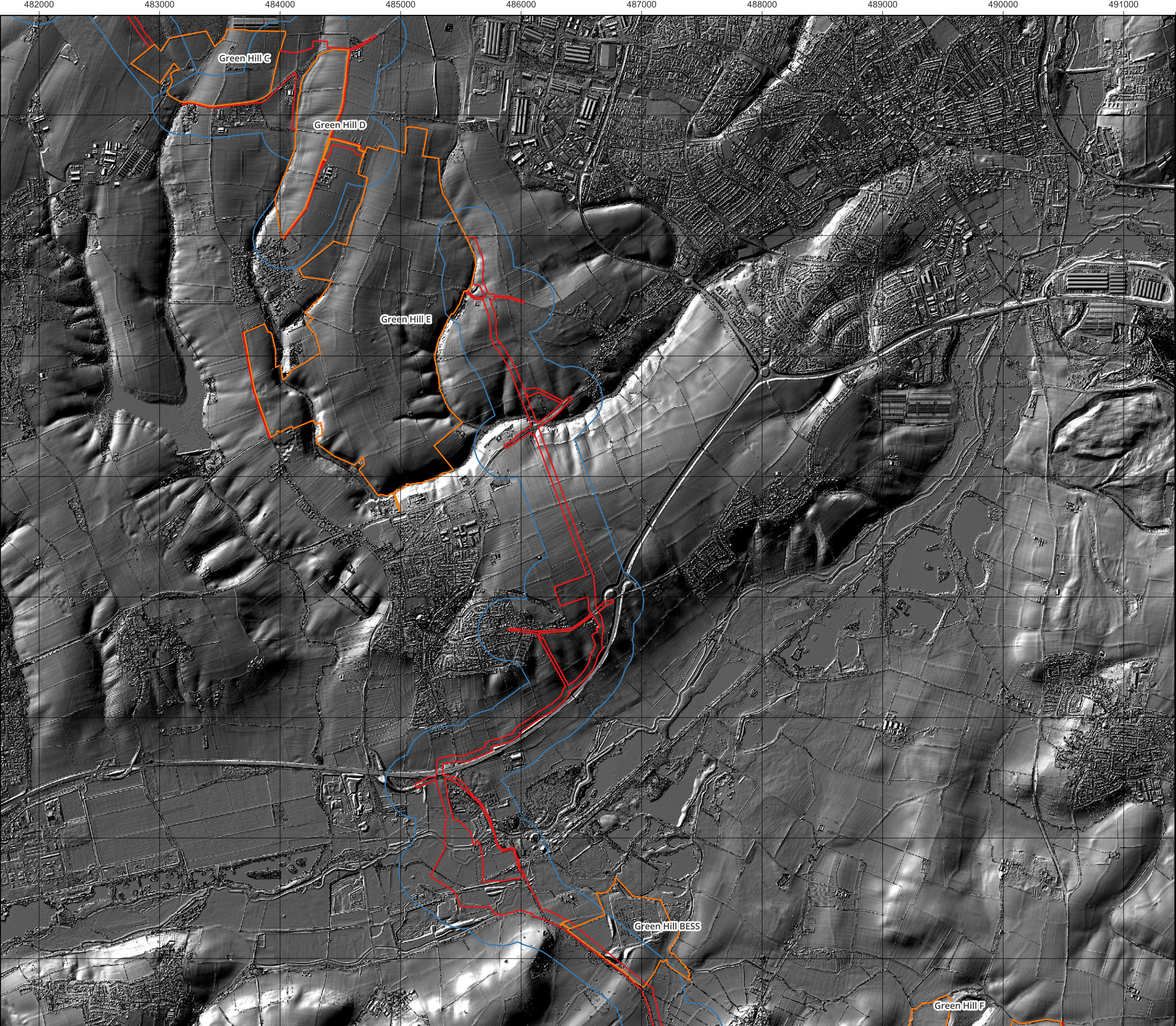
Data: © Northamptonshire Archives & Heritage Service, 2025; Lanpro, 2025; IGP, 2025
Base Maps: © Crown copyright and database rights 2025. Ordnance Survey



Co-ordinate system: OSGB36 / British National Grid

Scale: 1:30000 @ A3





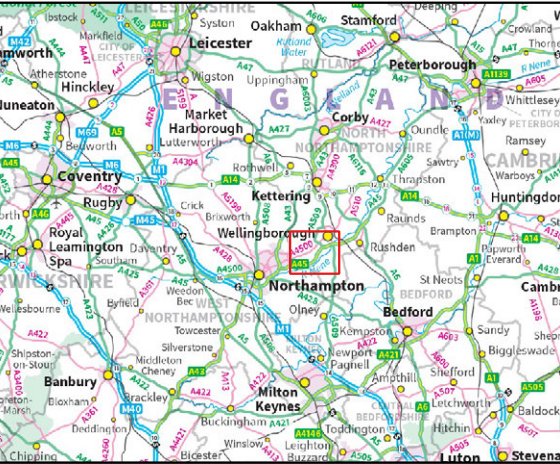
Green Hill Solar Farm Cable Route Corridor

Archaeological Desk-based Assessment

Title: Figure 9. Section 2 of the study site with Environment Agency National LIDAR Programme Digital Surface Model (DSM) data

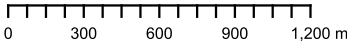
- Legend:
- Study site
 - Search Area
 - Proposed Solar site

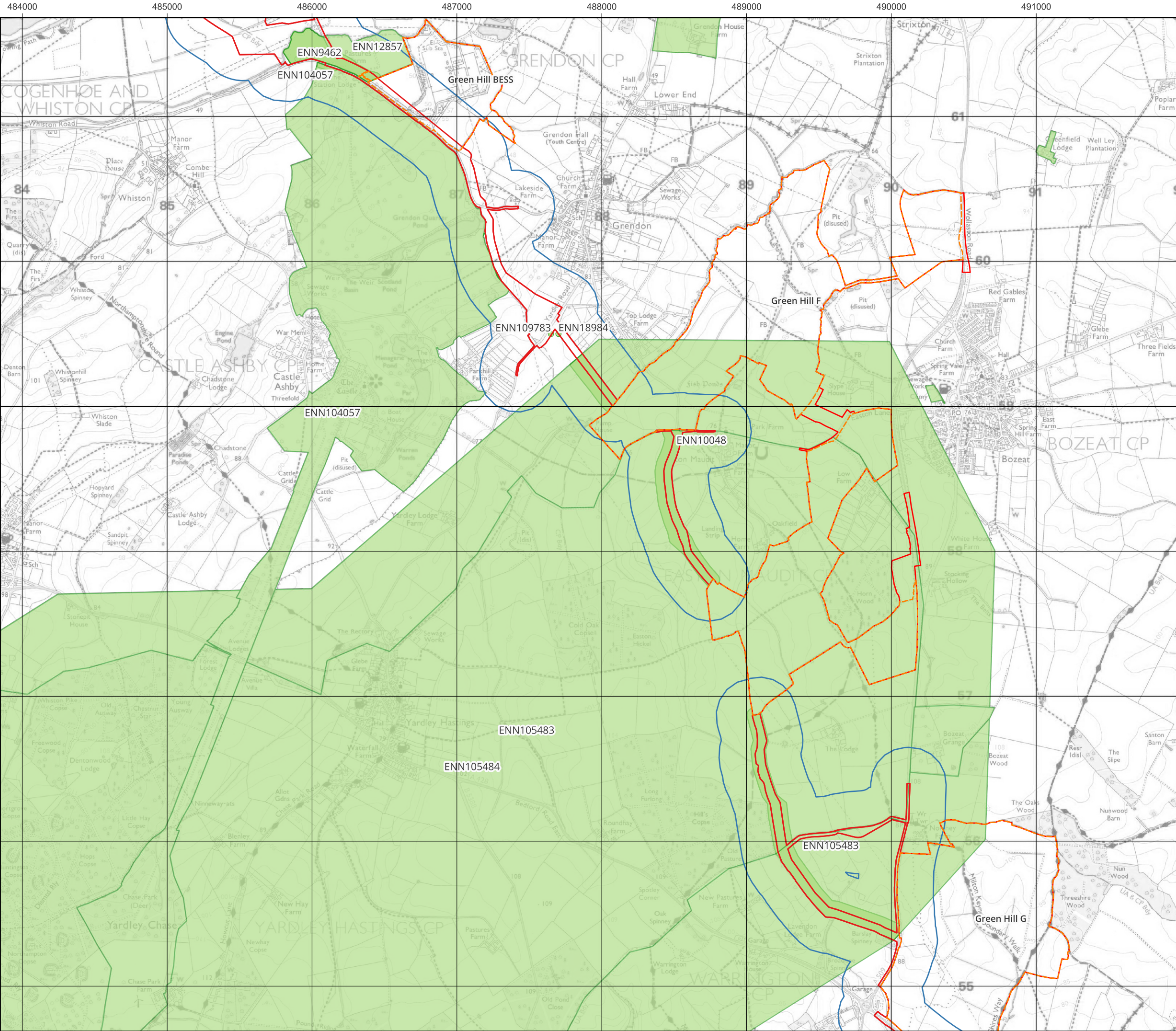
Data: © Northamptonshire Archives & Heritage Service, 2025; Lanpro, 2025; IGP, 2025
Base Maps: © Crown copyright and database rights 2025. Ordnance Survey



Co-ordinate system: OSGB36 / British National Grid

Scale: 1:30000 @ A3





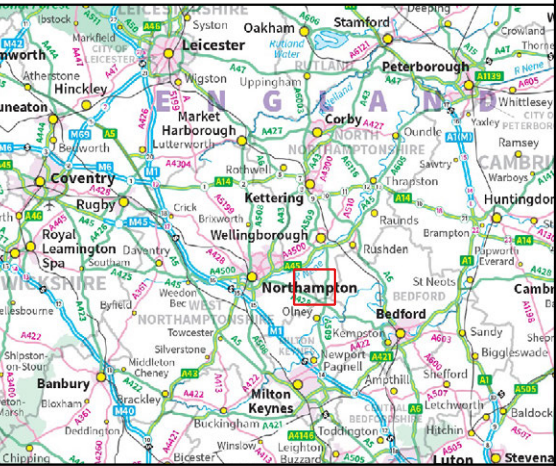
**Green Hill Solar Farm
Cable Route Corridor**

Archaeological Desk-based Assessment

Title:
Figure 11. Section 3 of the study site with the location of NRHE and HER 'event' records

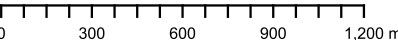
- Legend:
- Study site
 - Search Area
 - Proposed Solar site
 - HER 'event' point
 - HER 'event' line
 - HER 'event' area
 - NRHE 'event' point

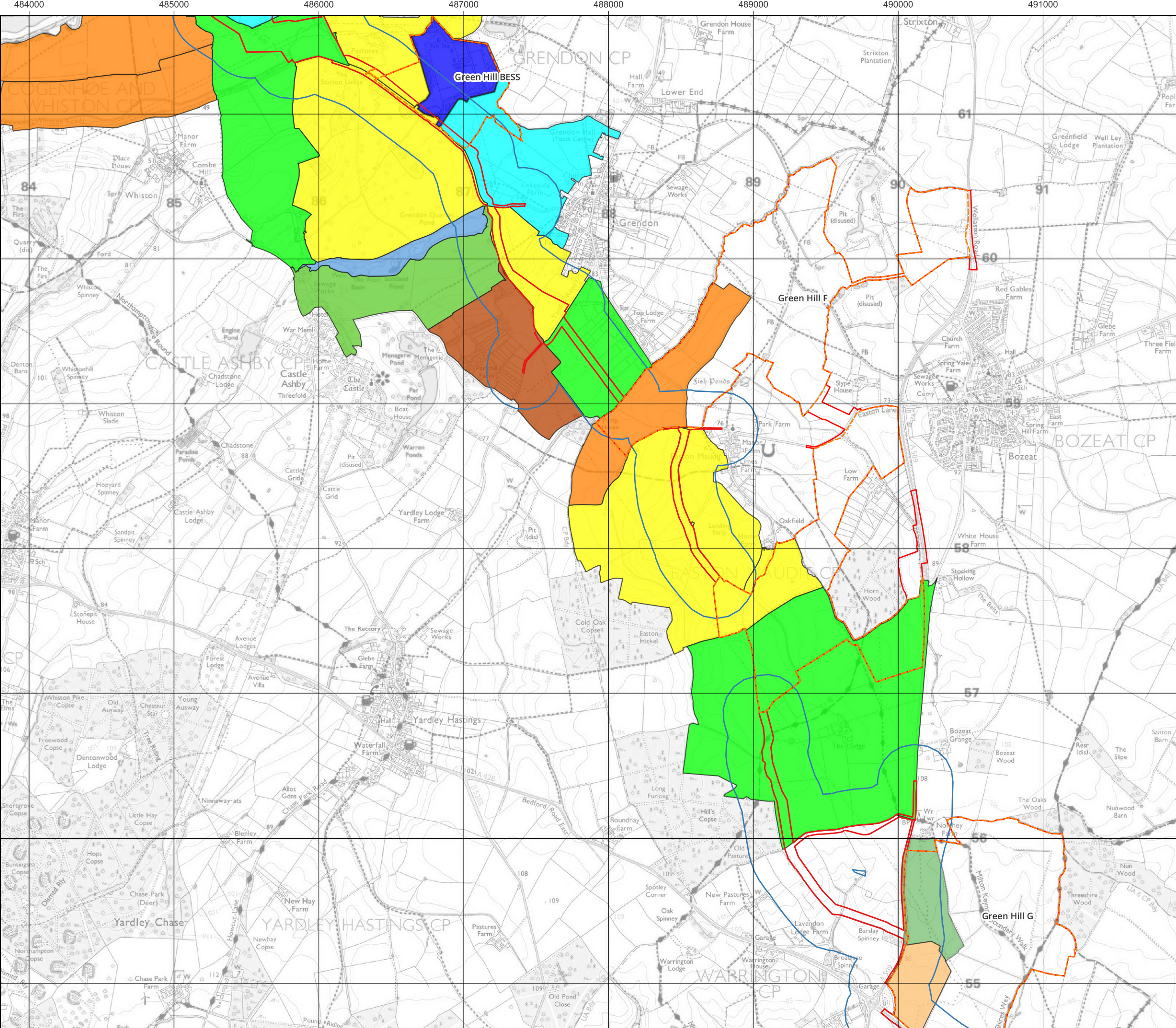
Data: © Northamptonshire Archives & Heritage Service, 2025; Lanpro, 2025; IGP, 2025
Base Maps: © Crown copyright and database rights 2025. Ordnance Survey



Co-ordinate system: OSGB36 / British National Grid

Scale: 1:25000 @ A3





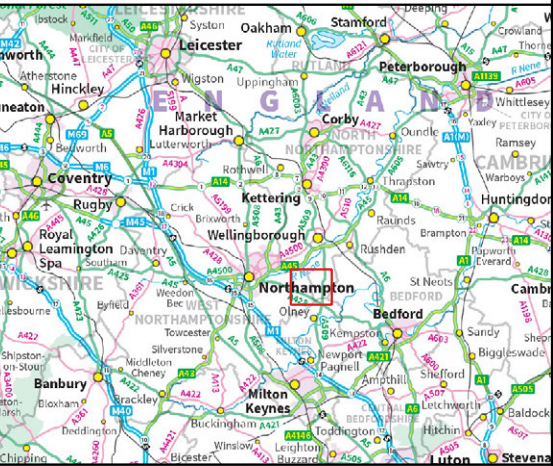
**Green Hill Solar Farm
Cable Route Corridor**

Archaeological Desk-based Assessment

Title: Figure 12. Section 3 of the study site with the Northamptonshire and Milton Keynes HLC 'broad types'

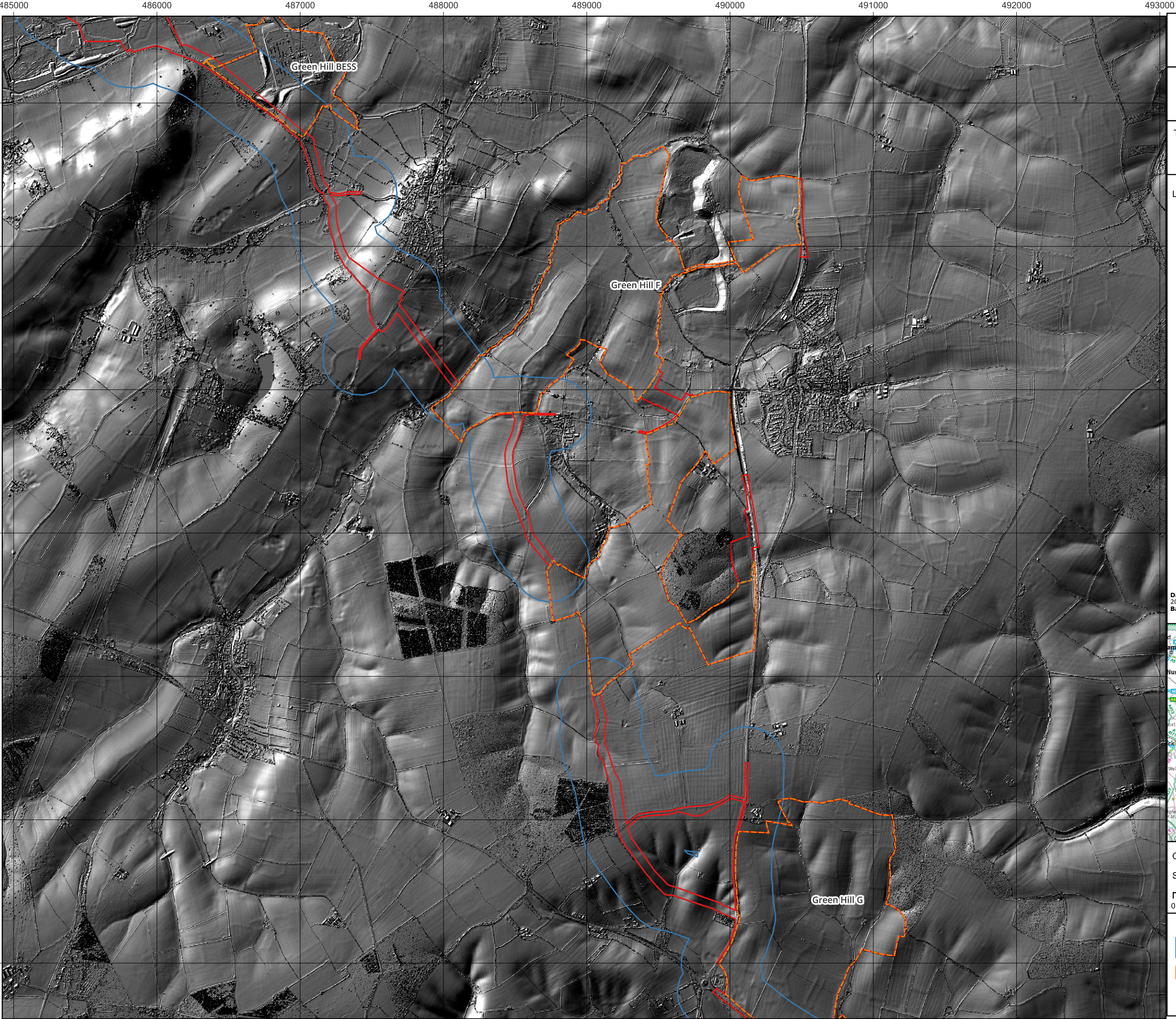
- Legend:
- Study site
 - Search Area
 - Proposed Solar site
 - Green Hill HLC
 - Lake
 - Parkland
 - Earlier parliamentary enclosure
 - Large modern fields
 - Modern fields
 - Pre 19th century non parliamentary enclosure
 - Fragmented Modern Fields/Civic
 - 19th century parliamentary enclosure
 - Enclosure (20th Century Prairie Fields)
 - Parliamentary Enclosure (Divided Allotments)

Data: © Northamptonshire Archives & Heritage Service, 2025; Lanpro, 2025; IGP, 2025
Base Maps: © Crown copyright and database rights 2025. Ordnance Survey



Co-ordinate system: OSGB36 / British National Grid
Scale: 1:25000 @ A3
0 300 600 900 1,200 m





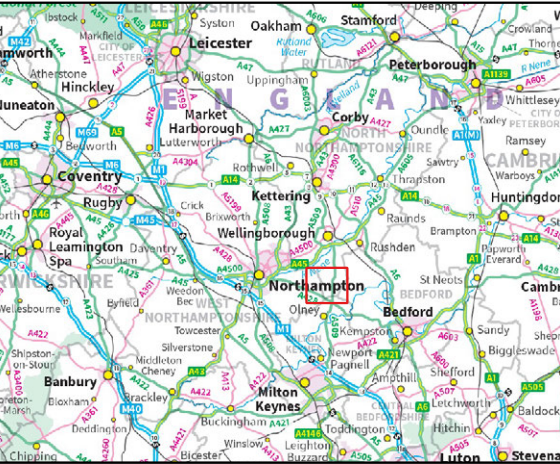
**Green Hill Solar Farm
Cable Route Corridor**

Archaeological Desk-based Assessment

Title: Figure 13. Section 3 of the study site with
Environment Agency National LIDAR Programme
Digital Surface Model (DSM) data

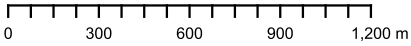
- Legend:
- Study site
 - Search Area
 - Proposed Solar site

Data: © Northamptonshire Archives & Heritage Service, 2025; Lanpro, 2025; IGP, 2025
Base Maps: © Crown copyright and database rights 2025. Ordnance Survey



Co-ordinate system: OSGB36 / British National Grid

Scale: 1:25000 @ A3



Appendix 1 Gazetteer

The following table provides details of heritage assets recorded on the Northamptonshire and Milton Keynes HER within 250m of the study site. These have been listed in order of their reference numbers, and their locations are marked on Figure 2, 3, 6, 7, 10 and 11.

Monument Ref.	Name	Grade	Period
NHLE			
1000385	CASTLE ASHBY REGISTERED PARK AND GARDEN	I	Post-medieval
1040782	THE OLD VICARAGE	II	Post-medieval
1293977	DODDINGTON BARN	II	Modern
1294156	STATION LODGE	II	Modern

HER ID	NRHE ID	Name	Period
HER 'monument' records			
MNN101967	3654/0/0	Unstratified Medieval Finds	Medieval
MNN102325	7237/0/0	Unstratified Romano-British Finds	Roman
MNN102882	7354/0/0	Unstratified, Undated Pottery, north of Glebe Farm	Early Iron Age to Late Medieval
MNN102930	7381/1	Wellingborough to Northampton Turnpike	Post Medieval to Late 20th Century
MNN103130	7237	Possible site of Romano-British activity	Roman
MNN103657	02/01/6294	Castle Ashby And Earls Barton Station	Modern to Mid 20th Century
MNN103803	7964/0/1	WWII Searchlight	Second World War
MNN103825	05/03/8445	WWII Pillbox, Sywell Airfield	Second World War
MNN104091	12/01/8445	Concrete hard standings	Mid 20th Century to Late 20th Century
MNN110328	3321/0/19	Station Lodge	Modern to Late 20th Century
MNN110993	1406/0/10	The Old Vicarage	Post Medieval to Modern

MNN111070	3721/0/4	Doddington Barn	Post Medieval to Modern
MNN115915	9201/0/1	Clay Hills Searchlight Site	Second World War
MNN117419	5866/0/1	Corner of possible enclosure, undated (Morphed Aerial Archaeology Interpretation)	Unknown
MNN117471	2058/0/3	Possible Prehistoric Settlement Features (Morphed Aerial Archaeology Interpretation)	Prehistoric
MNN117479	2058/0/6	Romano-British Northern Boundary Ditches (Morphed Aerial Archaeology Interpretation) checked	Roman
MNN117508	01/01/9019	Possible Medieval/Post Medieval Quarry Pit (Morphed Aerial Archaeology Interpretation)	Medieval to Post Medieval
MNN117514	2061/0/5	Possible prehistoric/Roman ditch (Morphed Aerial Archaeology Interpretation)	Unknown
MNN117515	2061/0/1	Possible undated enclosure (Morphed Aerial Archaeology Interpretation)	Unknown
MNN117516	2061/0/4	Possible prehistoric/Roman enclosure (Morphed Aerial Archaeology Interpretation)	Unknown
MNN118396	3829/0/1	Undated Enclosure (Morphed Aerial Archaeology Interpretation)	Unknown
MNN118397	3829/0/2	Possible Enclosure, Undated (Morphed Aerial Archaeology Interpretation)	Unknown
MNN118398	3829/0/3	Possible Enclosure, Undated (Morphed Aerial Archaeology Interpretation)	Unknown
MNN118399	3829/0/4	Possible Quarry Pits, Undated (Morphed Aerial Archaeology Interpretation)	Unknown
MNN118405	3654/0/1	Possible Medieval Hollow Ways (Morphed Aerial Archaeology Interpretation)	Early Saxon to Late Medieval
MNN118406	3654/0/2	Possible Medieval Hollow Ways (Morphed Aerial Archaeology Interpretation)	Early Saxon to Late Medieval
MNN118407	3654/0/3	Possible Medieval Hollow Ways (Morphed Aerial Archaeology Interpretation)	Early Saxon to Late Medieval
MNN118408	3654/0/4	Possible Linear Settlement Features (Morphed Aerial Archaeology Interpretation)	Early Saxon to Late Medieval
MNN118409	3654/0/5	Possible Linear Settlement Features (Morphed Aerial Archaeology Interpretation)	Early Saxon to Late Medieval
MNN118411	3654/0/6	Possible Medieval Ditch (Morphed Aerial Archaeology Interpretation)	Early Saxon to Late Medieval
MNN118603	5889/0/8	Undated Enclosure (Morphed Aerial Archaeology Interpretation)	Unknown
MNN118604	5889/0/9	Possible Hut Circle (Morphed Aerial Archaeology Interpretation)	Unknown
MNN118606	1495/0/1	Possible Medieval Boundary Ditch (Morphed Aerial Archaeology Interpretation)	Early Saxon to Mid 20th Century
MNN118608	5889/0/1	Possible Enclosure, Undated (Morphed Aerial Archaeology Interpretation)	Unknown

MNN118609	5889/0/3	Possible Ditch, Undated (Morphed Aerial Archaeology Interpretation)	Unknown
MNN118611	5889/0/2	Possible Enclosure, Undated (Morphed Aerial Archaeology Interpretation)	Unknown
MNN118613	5889/0/13	Undated Ditches (Morphed Aerial Archaeology Interpretation)	Unknown
MNN118614	5889/0/24	Possible Enclosure, Undated (Morphed Aerial Archaeology Interpretation)	Unknown
MNN118615	5889/0/23	Possible Enclosure, Undated (Morphed Aerial Archaeology Interpretation)	Unknown
MNN118616	5889/0/22	Possible Enclosure, Undated (Morphed Aerial Archaeology Interpretation)	Unknown
MNN118617	5889/0/21	Possible Enclosure, Undated (Morphed Aerial Archaeology Interpretation)	Unknown
MNN118618	5889/0/20	Possible Enclosure, Undated (Morphed Aerial Archaeology Interpretation)	Unknown
MNN118619	5889/0/19	Possible Enclosure, Undated (Morphed Aerial Archaeology Interpretation)	Unknown
MNN118620	5889/0/18	Possible Enclosure, Undated (Morphed Aerial Archaeology Interpretation)	Unknown
MNN118621	5889/0/17	Possible Enclosure, Undated (Morphed Aerial Archaeology Interpretation)	Unknown
MNN118622	5889/0/16	Possible Enclosure, Undated (Morphed Aerial Archaeology Interpretation)	Unknown
MNN118623	5889/0/15	Possible Enclosure, Undated (Morphed Aerial Archaeology Interpretation)	Unknown
MNN118624	5889/0/14	Possible Enclosure, Undated (Morphed Aerial Archaeology Interpretation)	Unknown
MNN118625	3864/0/1	Possible Prehistoric Hut Circle (Morphed Aerial Archaeology Interpretation)	Prehistoric
MNN118636	1465/0/3	Possible undated ditch (Morphed Aerial Archaeology Interpretation)	Unknown
MNN118650	3870/0/2	Possible Ditches, Undated (Morphed Aerial Archaeology Interpretation)	Unknown
MNN118678	5898/0/1	Possible Ditch, Undated (Morphed Aerial Archaeology Interpretation)	Unknown
MNN118679	5898/0/3	Undated Pits (Morphed Aerial Archaeology Interpretation)	Unknown
MNN118680	5898/0/2	Possible Ditch, Undated (Morphed Aerial Archaeology Interpretation)	Unknown
MNN118736	3290/0/6	Probable undated ditch (Morphed Aerial Archaeology Interpretation) checked	Unknown
MNN118737	3290/0/7	Possible undated ditch (Morphed Aerial Archaeology Interpretation) checked	Unknown
MNN118738	1406/0/35	Medieval settlement remains, Easton Maudit (Morphed Aerial Archaeology Interpretation) checked	Medieval to Post Medieval
MNN119120	3557/0/1	Undated Enclosure (Morphed Aerial Archaeology Interpretation)	Unknown
MNN119121	3545/0/1	Possible Prehistoric Round Barrow (Morphed Aerial Archaeology Interpretation)	Prehistoric
MNN119122	3545/0/2	Prehistoric Enclosure (Morphed Aerial Archaeology Interpretation)	Prehistoric
MNN119144	2682/0/5	Large Rectangular Medieval Enclosure (Morphed Aerial Archaeology Interpretation)	Early Saxon to Late Medieval

MNN119145	2682/0/8	Subrectangular Medieval Enclosure (Morphed Aerial Archaeology Interpretation)	Early Saxon to Late Medieval
MNN119146	2682/0/7	Small Square Medieval Enclosure (Morphed Aerial Archaeology Interpretation)	Early Saxon to Late Medieval
MNN119147	2682/0/11	Small Sub-Circular Medieval Enclosure (Morphed Aerial Archaeology Interpretation)	Early Saxon to Late Medieval
MNN119150	2682/0/4	Subrectangular Medieval Enclosure (Morphed Aerial Archaeology Interpretation)	Early Saxon to Late Medieval
MNN119151	2682/0/13	Possible Ditch (Morphed Aerial Archaeology Interpretation)	Early Saxon to Late Medieval
MNN119152	2682/0/9	Medieval Enclosure (Morphed Aerial Archaeology Interpretation)	Early Saxon to Late Medieval
MNN119153	2682/0/10	Part of Possible Medieval Enclosure (Morphed Aerial Archaeology Interpretation)	Early Saxon to Late Medieval
MNN119154	2682/0/12	Three Parallel Ditches, Undated (Morphed Aerial Archaeology Interpretation)	Unknown
MNN119155	2682/0/2	Probable Medieval/Post Medieval Street (Morphed Aerial Archaeology Interpretation)	Early Saxon to Post Medieval
MNN119157	2682/0/6	Possible Modern Ditches (Morphed Aerial Archaeology Interpretation)	Modern to Late 20th Century
MNN119158	01/02/3563	Possible enclosure (Morphed Aerial Archaeology Interpretation) checked	Unknown
MNN119159	02/02/3563	Possible enclosure (Morphed Aerial Archaeology Interpretation) checked	Unknown
MNN119160	03/02/3563	Possible pit (Morphed Aerial Archaeology Interpretation) checked	Unknown
MNN119161	04/02/3563	Probable enclosure (Morphed Aerial Archaeology Interpretation) checked	Unknown
MNN119162	05/02/3563	Possible enclosure (Morphed Aerial Archaeology Interpretation) checked	Unknown
MNN119163	06/02/3563	Possible enclosure (Morphed Aerial Archaeology Interpretation) checked	Unknown
MNN119164	07/02/3563	Probable enclosure (Morphed Aerial Archaeology Interpretation) checked	Unknown
MNN119165	08/02/3563	Probable enclosure (Morphed Aerial Archaeology Interpretation) checked	Unknown
MNN119166	09/02/3563	Probable enclosure (Morphed Aerial Archaeology Interpretation) checked	Unknown
MNN119167	10/02/3563	Probable ditch (Morphed Aerial Archaeology Interpretation) checked	Unknown
MNN119178	3569/0/2	Possible Trackway, Undated (Morphed Aerial Archaeology Interpretation)	Unknown
MNN119179	3572/0/5	Undated Rectilinear Enclosure (Morphed Aerial Archaeology Interpretation)	Unknown

MNN119200	5896/0/1	Undated Enclosure (Morphed Aerial Archaeology Interpretation)	Unknown
MNN119201	5896/0/2	Undated Enclosure (Morphed Aerial Archaeology Interpretation)	Unknown
MNN119202	5896/0/4	Undated Enclosure (Morphed Aerial Archaeology Interpretation)	Unknown
MNN119203	5896/0/3	Undated Enclosure (Morphed Aerial Archaeology Interpretation)	Unknown
MNN119204	5896/0/7	Possible Quarry Pits, Undated (Morphed Aerial Archaeology Interpretation)	Unknown
MNN119205	5896/0/6	Undated Ring Ditch, Possible Quarry Pit (Morphed Aerial Archaeology Interpretation)	Unknown
MNN119206	5896/0/5	Undated Ditches (Morphed Aerial Archaeology Interpretation)	Unknown
MNN119208	2682/0/15	Possible Medieval Ditch (Morphed Aerial Archaeology Interpretation)	Early Saxon to Late Medieval
MNN119267	3551/0/8	Saxon to medieval enclosure (Morphed Aerial Archaeology Interpretation)	Early Saxon to Late Medieval
MNN119499	5789/0/14	Possible prehistoric enclosure (Morphed Aerial Archaeology Interpretation)	Prehistoric
MNN119500	5789/0/2	Prehistoric enclosure (Morphed Aerial Archaeology Interpretation)	Prehistoric
MNN119501	5789/0/3	Prehistoric enclosure (Morphed Aerial Archaeology Interpretation)	Prehistoric
MNN119502	5789/0/4	Possible prehistoric enclosure (Morphed Aerial Archaeology Interpretation)	Prehistoric
MNN119503	5789/0/5	Possible prehistoric enclosure (Morphed Aerial Archaeology Interpretation)	Prehistoric
MNN119504	5789/0/7	Prehistoric enclosure (Morphed Aerial Archaeology Interpretation)	Prehistoric
MNN119505	5789/0/8	Prehistoric enclosure (Morphed Aerial Archaeology Interpretation)	Prehistoric
MNN119506	5789/0/9	Possible prehistoric enclosure (Morphed Aerial Archaeology Interpretation)	Prehistoric
MNN119507	5789/0/10	Possible prehistoric enclosure (Morphed Aerial Archaeology Interpretation)	Prehistoric
MNN119508	5789/0/11	Prehistoric ditch (Morphed Aerial Archaeology Interpretation)	Prehistoric
MNN119509	5789/0/12	Prehistoric enclosure (Morphed Aerial Archaeology Interpretation)	Prehistoric
MNN119510	5789/0/13	Prehistoric enclosure (Morphed Aerial Archaeology Interpretation)	Prehistoric
MNN119511	5789/0/15	Prehistoric enclosure (Morphed Aerial Archaeology Interpretation)	Prehistoric
MNN119512	5789/0/6	Prehistoric ditch (Morphed Aerial Archaeology Interpretation)	Prehistoric
MNN119513	5789/0/1	Prehistoric ditch (Morphed Aerial Archaeology Interpretation)	Prehistoric
MNN119514	5789/0/16	Prehistoric ditch (Morphed Aerial Archaeology Interpretation)	Prehistoric
MNN119515	5789/0/17	Prehistoric enclosure (Morphed Aerial Archaeology Interpretation)	Prehistoric
MNN119516	5789/0/18	Prehistoric enclosure (Morphed Aerial Archaeology Interpretation)	Prehistoric
MNN119517	5789/0/19	Prehistoric enclosure (Morphed Aerial Archaeology Interpretation)	Prehistoric

MNN119518	5789/0/20	Prehistoric enclosure (Morphed Aerial Archaeology Interpretation)	Prehistoric
MNN119519	5789/0/21	Prehistoric ditch (Morphed Aerial Archaeology Interpretation)	Prehistoric
MNN119520	7900/0/2	Saxon/ medieval quarry pit (Morphed Aerial Archaeology Interpretation)	Early Saxon to Late Medieval
MNN119521	7900/0/1	Possible Saxon/ medieval ditch (Morphed Aerial Archaeology Interpretation)	Early Saxon to Late Medieval
MNN119522	5868/0/7	Possible undated enclosure (Morphed Aerial Archaeology Interpretation)	Unknown
MNN119527	5868/0/2	Undated road (Morphed Aerial Archaeology Interpretation)	Unknown
MNN119561	5868/0/1	Possible undated ditch (Morphed Aerial Archaeology Interpretation)	Unknown
MNN119563	5886/0/1	Possible undated enclosure (Morphed Aerial Archaeology Interpretation)	Unknown
MNN119564	5886/0/2	Possible undated enclosure (Morphed Aerial Archaeology Interpretation)	Unknown
MNN119565	5886/0/3	Undated Trackway (Morphed Aerial Archaeology Interpretation)	Unknown
MNN119566	5886/0/4	Possible Trackway, Undated (Morphed Aerial Archaeology Interpretation)	Unknown
MNN119686	3483/0/1	Possible Medieval/Post Medieval Pond (Morphed Aerial Archaeology Interpretation)	Early Saxon to Late Medieval
MNN119709	1987/0/1	Undated trackway (Morphed Aerial Archaeology Interpretation)	Unknown
MNN119710	1987/0/2	Probable prehistoric ring ditch (Morphed Aerial Archaeology Interpretation)	Bronze Age
MNN119711	1987/0/3	Probable prehistoric ring ditch (Morphed Aerial Archaeology Interpretation)	Prehistoric
MNN119712	1987/0/1	Probable prehistoric ring ditch (Morphed Aerial Archaeology Interpretation)	Prehistoric
MNN1304	3290	Possible undated enclosures, east of Easton Way	Unknown
MNN1310	3296	Probable Romano-British Settlement, south of Yardley Road	Roman
MNN118682	3296/0/2	Possible Romano-British Enclosure (Morphed Aerial Archaeology Interpretation)	Roman
MNN132682	6521/0/4	Open Fields Project: Areas of Survival of Ridge & Furrow	Medieval
MNN132698	5966/0/1	Open Fields Project: Areas of Survival of Ridge & Furrow	Medieval to Modern
MNN133164	8440/0/4	Open Fields Project: Areas of Survival of Ridge & Furrow	Medieval
MNN133165	8440/0/5	Open Fields Project: Areas of Survival of Ridge & Furrow	Medieval
MNN133173	5966/0/3	Open Fields Project: Areas of Survival of Ridge & Furrow	Medieval
MNN133174	5966/0/4	Open Fields Project: Areas of Survival of Ridge & Furrow	Medieval
MNN133655	6521/0/3	Open Fields Project: Areas of Survival of Ridge & Furrow	Medieval
MNN133657	9407/0/4	Open Fields Project: Areas of Survival of Ridge & Furrow	Medieval
MNN133938	5966/0/5	Open Fields Project: Areas of Survival of Ridge & Furrow	Medieval
MNN135228	5966/0/6	Probable Medieval/Post Medieval Plough Headlands	Medieval to Modern
MNN135330	3803/2	Northampton to Kettering Turnpike	Modern
MNN136113	9019	Possible Medieval/Post Medieval Industrial Activity	Medieval to Post Medieval
MNN136593	9019/1	Possible Medieval/Post Medieval Quarry	Medieval to Post Medieval

MNN137150	7903/1	The Grange	Modern to Late 20th Century
MNN13803	6600/1	Narrow Gauge Railway, Sywell Wood	Early 20th Century to Late 20th Century
MNN1393	3545	Possible Prehistoric settlement and/or burial site, south of Debdale Spring Farm	Lower Palaeolithic to Late Medieval
MNN1399	3551	Deserted medieval settlement of Cotton	Medieval to Post Medieval
MNN1405	3562	Possible Prehistoric/Romano-British Activity	Lower Palaeolithic to Late Roman
MNN141195	2199	Open Field System, Hannington	Medieval to Modern
MNN141203	2199/0/4	Open Fields Project: Areas of Survival of Ridge & Furrow	Medieval to Modern
MNN141237	8310	Wilby Open Field System	Medieval
MNN14165	622/1	Coventry to Peterborough Road Route (via Northampton)	Medieval to Post Medieval
MNN142555	8004	20th Century Waterworks (Higham Ferrers & Rushden Water Board)	Edwardian to Late 20th Century
MNN1426	3654	Probable Medieval Settlement, south of the Kettering Road	Medieval to Post Medieval
MNN142950	3321/0/27	Drive Through C19th Northern Extension to the Park	Modern to Late 20th Century
MNN142954	3321/0/31	Grendon Quarter Pond	Modern to Late 20th Century
MNN143051	8924	Probable Romano-British Settlement	Roman
MNN144212	4576	Uncertain, Undated Activity	Unknown
MNN144528	9407/0/8	Possible ridge and furrow remains	Medieval to Post Medieval
MNN144529	3567/0/2	Possible Roman field system	Unknown
MNN14572	2664/1	Brookhill House	Modern to Late 20th Century
MNN160137	195	The Jurassic Way	Prehistoric
MNN160479	3483	Possible Medieval/Post Medieval Water Management	Medieval to Post Medieval
MNN16264	6294/1	London & North Western Railway (Northampton and Peterborough Branch Railway/Nene Valley Railway)	Modern to Late 20th Century
MNN163648	7902/0/0	Unstratified prehistoric and Romano-British finds	Lower Palaeolithic to Late Roman

MNN163649	7902	Possible site of prehistoric and Romano-British activity	Lower Palaeolithic to Late Roman
MNN163652	16/01/8445	Blister aircraft hangers	Second World War
MNN164367	6599/0/2	Remains of post medieval and/or modern building	Post Medieval to Mid 20th Century
MNN164368	7237/0/0	Romano-British pottery scatter	Roman
MNN164392	5886/0/5	Possible undated ditches	Unknown
MNN164398	2001/0/2	Medieval boundary ditches	Medieval
MNN164414	7900	Site of uncertain Saxon/ medieval activity	Early Saxon to Late Medieval
MNN166904	5886/0/6	Uncertain, Undated Features	Unknown
MNN167130	8765/0/1	Possible Medieval/Post Medieval Ditch & Bank, Hardwick Wood	Medieval to Post Medieval
MNN167177	01/01/6599	Possible Medieval/Post Medieval Ditch & Bank	Medieval to Post Medieval
MNN169236	01/01/8408	Ironstone Workings	First World War to Early 20th Century
MNN169981	1524/0/1	Probable late Iron Age settlement, south-east of Sywell Wood	Late Iron Age
MNN170131	3830/0/1	Possible ditch, undated	Unknown
MNN170132	2199/0/10	Medieval/post-medieval ridge and furrow cultivation	Medieval to Post Medieval
MNN170637	3872/0/2	Prehistoric worked flint	Prehistoric
MNN170737	6916/0/1	Glebe Barn, Mears Ashby Road	Modern
MNN171494	1524/0/2	Probable late Iron Age settlement, south-east of Sywell Wood	Late Iron Age
MNN171514	21/03/8445	WWII Stanton shelter, Sywell Airfield	Second World War
MNN171603	8792/1	Site of Whitemills	Medieval to Modern
MNN17286	8445/1	Sywell Airfield	Early 20th Century to Mid 20th Century
MNN173054	5897/0/2	Possible later prehistoric settlement	Late Prehistoric
MNN17385	8534/1	WWII PoW Camp, Grendon	Second World War
MNN11757	1406/1	Easton Maudit Church	Medieval
MNN20409	1406/2/1	Site of medieval/post-medieval manor house and gardens, Easton Maudit	Medieval to Modern
MNN21298	1985/0/1	Low Hill, east of Mears Ashby Road	Early Bronze Age to Post Medieval
MNN21300	01/01/1987	Possible Bronze Age barrow cemetery	Prehistoric
MNN21322	2001/0/1	Possible medieval/ post medieval moat	Medieval to Post Medieval
MNN2164	5868	Site of uncertain, undated activity, south-east of White House	Unknown
MNN2168	5886	Uncertain, Undated Activity	Unknown

MNN2172	5896	Uncertain, Undated Cropmarks	Unknown
MNN2174	5898	Uncertain, Undated cropmarks	Unknown
MNN23290	461/0/0	Unstratified Early Roman Coin	Roman
MNN23298	3564/0/1	Unstratified Palaeolithic Finds	Palaeolithic
MNN23300	3567/0/0	Roman Ditches with pottery and tiles	Roman
MNN23301	01/01/3568	Possible prehistoric round barrow	Lower Palaeolithic to Late Roman
MNN23304	3570/0/0	Unstratified Prehistoric Flint	Prehistoric
MNN23473	3713/0/0	Unstratified Finds, Mainly Prehistoric	Lower Palaeolithic to Late Roman
MNN23501	3725/0/0	Unstratified Undated Pottery	Unknown
MNN23524	3738/0/4	Unstratified medieval pottery, Earls Barton	Medieval
MNN23525	3740/0/0	Possible Roman kiln and pottery, Earls Barton	Roman
MNN23618	3830/0/0	Unstratified Prehistoric Flints	Prehistoric
MNN23619	3831/0/1	Unstratified Saxon Pottery	Saxon
MNN23655	3864/0/0	Unstratified Finds Indicating Possible Kiln, Undated	Unknown
MNN23656	3864/0/2	Possible Iron Age Pits	Iron Age
MNN23657	3866/0/1	Unstratified Neolithic/Bronze Age find	Prehistoric
MNN23665	3873/0/1	Prehistoric flint scraper	Prehistoric
MNN23669	3875/0/2	Flint scatter, north of Brookhill Farm	Prehistoric
MNN23671	3877/0/1	Probable Iron Age settlement, north-east of Sandpit Barn	Iron Age
MNN23672	3878/0/0	Flint scatter, north-west of Springhill	Lower Palaeolithic to Late Roman
MNN25844	5897/0/1	Possible Ditched Enclosure, Undated	Unknown
MNN27210	2002/0/1	Undated ditches, south-east of Teacaddy Farm	Unknown
MNN27690	1406/0/2	Possible medieval fishpond, Easton Maudit	Medieval
MNN27788	3569/0/1	Possible Prehistoric Ditched Trackway	Lower Palaeolithic to Post Medieval
MNN27851	3732/0/0	Unstratified Roman finds, Grendon	Roman
MNN28652	3554/0/1	Unstratified Palaeolithic Find	Prehistoric
MNN29093	6116/0/0	Unstratified Romano-British Pottery	Roman
MNN29658	6519/0/1	Possible former river channel	Unknown
MNN29659	6520/0/1	Possible remains of modern building	Modern
MNN29660	6521/0/1	Medieval Ridge & Furrow	Medieval to Post Medieval
MNN29661	6522/0/0	Unstratified finds	Lower Palaeolithic to Modern
MNN29662	6521/0/2	Medieval Ridge & Furrow	Medieval to Post Medieval
MNN29663	6524/0/1	Uncertain feature, possibly modern	Unknown
MNN29780	6548/0/0	Unstratified Post Medieval/Modern Finds	Post Medieval to Modern
MNN29782	6550/0/0	Unstratified Post Medieval and Modern Finds	Post Medieval to Modern

MNN29869	01/01/6600	Modern well, possibly associated with timber railway	Early 20th Century to Late 20th Century
MNN3071	3187	Wilby Hall Park	Post Medieval to Late 20th Century
MNN31549	01/01/2664	Possible Garden & Orchard	Modern to Late 20th Century
MNN32511	3294/0/0	Unstratified Romano-British Finds	Roman
MNN32356	1994/1/1	Probable Romano-British Pottery Manufacturing site	Roman
MNN32560	3730/0/0	Unlocated Anglo-Saxon cemetery, Grendon	Saxon
MNN33171	6551/0/1	Undated earthwork bank, possibly modern	Unknown
MNN35215	2058/0/5	C3rd/4th Wall & Gullies	Late Roman
MNN4098	1406	Easton Maudit	Medieval to Late 20th Century
MNN4149	1495	Post-Inclosure Field System	Modern to Late 20th Century
MNN4444	1984	Probable prehistoric and/or Roman settlement, west of Hockerhill Farm	Lower Palaeolithic to Late Roman
MNN4471	2040	Probable Iron Age & Romano-British Settlement	Early Iron Age to Late Roman
MNN4485	2058	Possible Prehistoric/Romano-British Settlement	Lower Palaeolithic to Late Roman
MNN4714	2425	The River Nene	Lower Palaeolithic to Late 20th Century
MNN4874	2682	Barton Thorpe, Thorp Juxta Barton	Medieval
MNN5176	3143	The River Nene Navigation (Kings Lynn to Northampton)	Modern to Late 20th Century
MNN5279	3321	Castle Ashby Park	Medieval to Late 20th Century
MNN5429	3557	Uncertain, Undated Activity (Probably Prehistoric)	Lower Palaeolithic to Late Roman
MNN5433	3563/2	Roman Settlement, east of Grendon Road	Roman
MNN5503	3653	Hannington	Medieval to Late 20th Century
MNN5534	3713	Possible Prehistoric Activity	Prehistoric
MNN5606	3829	Undated enclosures, east of Main Street	Unknown
MNN5607	3830	Possible Prehistoric Activity	Prehistoric

MNN5637	3870	Undated cropmarks	Lower Palaeolithic to Late Roman
MNN6057	4524	Warborough	Early Saxon to Late Medieval
MNN6058	4525	Berry Close	Early Saxon to Late Medieval
MNN6811	5789	Prehistoric settlement, south of Yeoman Farm	Iron Age
MNN6888	5889	Possible Prehistoric Settlement	Prehistoric
MNN7029	6116	Possible Romano-British Activity	Roman
MNN866	2001	Site of uncertain medieval to post medieval activity	Medieval to Post Medieval
MMK389	MMK389	slag patches	Medieval
MMK390	MMK390	Warrington	Medieval
MMK391	MMK391	Warrington	Medieval
MMK3480	MMK3480	Old Barn	Medieval
MMK3836	MMK3836	Olney Saxon boundary	Medieval
MMK7467	MMK7467	Site of building	Unknown
MMK7962	MMK7962	1 Iron Age feature	Iron Age
MMK7984	MMK7984	240 Medieval features; 8 Post Medieval features	Medieval
MMK8011	MMK8011	10 Iron Age features; 1 Medieval feature	Iron Age
MMK8028	MMK8028	8 Medieval features	Medieval
MMK8030	MMK8030	7 Iron Age features; 1 Medieval feature	Iron Age
MMK8049	MMK8049	1 Iron Age feature	Iron Age
MMK8112	MMK8112	8 Iron Age features	Iron Age
MMK5884	MMK5884	Kettering to Newport Pagnell Turnpike	Medieval
MMK5886	MMK5886	Northampton to Cold Brayfield (Bedford?) Turnpike	Medieval
NRHE ID	HER ID	Name	Period
NRHE 'monument' records			
345207	MNN32511	Roman sherds and tile found in Grendon parish while field walking, Spring 1966. In 1971 a 4th century bronze coin was found and in February 1973 the find of a coin of Constantius was reported.	Roman
345208	-	RB sherds etc.	Roman
345230	-	An alleged Iron Age or Roman Iron working site, but may well be Medieval.	Iron Age Roman
345231	MNN118738	Easton Maudit medieval & post-medieval settlement rems	Medieval
345233	MNN27690	Rectangular pond, probably a medieval fishpond	Medieval
345455	MNN23656	Pits found 1966. Doubtful IA.	Unknown
345483	MNN23671	Iron Age pottery & ditches suggest settlement	Iron Age

345494	MNN23672	Flint implements and waste suggest a flint working site	Prehistoric
345495	MNN21298	Round barrow used as hundredal meeting place	Prehistoric
345512	MNN119710	Cropmark	Unknown
345528	MNN27210	Two parallel ditches on air photograph	Unknown
345534	MNN23298	Palaeolithic implements were found in the gravel pit at Earls Barton in 1904. Finds included rolled early Acheulean handaxes and some waste flakes.	Prehistoric
345536	-	Bronze Age incense cup, Roman coin and pottery and Early Medieval inhumations found at Grendon.	Prehistoric Roman Medieval
345547	MNN1393	Cropmark.	Unknown
345575	MNN5433	Cropmarks. The cutting of a drain revealed a number of ditches containing Romano British pottery.	Unknown
345582	MNN27788	A possible ditched trackway, worked flints including a polished axe recovered.	Unknown
345597	MNN119164	Air photographs show enclosures pits and ditches	Unknown
345599	-	Cropmarks and finds of Roman pottery indicate a possible settlement site. Worked flints were also present.	Roman
345600	MNN23301	Ring ditch & L-shaped linear ditch on air photographs	Unknown
345602	MNN4874	Thorpe deserted medieval hamlet (remains)	Medieval
345642	MNN117467	Air photographs of ditches and pit alignments	Unknown
346872	MMK7984	U slag patches	Unknown
507134	-	Site of railway station on the Northampton and Peterborough branch line, opened in 1845 and closed in 1964.	Modern
543091	-	Early 18th century house. Restored 20th century.	Modern
961365	MNN23619	Anglo-Saxon sherd findspot	Medieval
968067	MNN5637	Ditches	Unknown
968639		Cropmark	Unknown
968640	MNN2168	Cropmark site	Unknown
968644		Roman poppy head beaker	Roman
968654	MNN23657	Neolithic or Early Bronze Age axe fragment	Prehistoric

1341696	MNN4714	The Nene enters the Wash below Wisbech. Up to the end of the 13th century it did this via the Great Ouse, but the latter changed course to King's Lynn, and the Nene was left to form a delta. Navigation was hampered by the silted outfalls. The delta ha	Unknown
1363947	MNN16264	The Northampton and Peterborough Branch Railway was opened in 1845, the 47.5 miles having taken only 2 years to build. Despite its utility as a through route, it was expensive to maintain, and in the face of increasing road competition it was closed to p	Modern
1412448	MNN17286	An airfield with military and civilian phases. It began as a civilian airfield run by Northamptonshire Flying Club in 1928. It was extended in 1932, and a club house opened in 1934. Its wartime role as a military airfield was with Royal Air Force Train	Modern
1412725	MNN17385	The site of a prisoner of war camp at Lakeside Farm.	WWII
1416104	MNN103803	A searchlight battery from World War II. On the list from Northamptonshire SMR where it is known only from documentary sources. It was probably constructed between 1939 and 1945 but its condition is uncertain at the time of the Defence of Britain survey.	WWII
1416121	MNN115915	The site of a searchlight battery from World War II. From a list from Northamptonshire SMR and known only from documentary sources. It was controlled by the 467 S/L Battery 73 S/L Regiment. it would have been constructed between 1939 and 1945 but the pres	WWII
1419546	-	World War II battle headquarters at Sywell Airfield. It was constructed between 1939 and 1945 but at the time of the Defence of Britain survey the site was in an uncertain condition.	WWII
1429650	MNN103825	Destroyed World War II Type 22 pillbox at Sywell Airfield. On the north aerodrome boundary, that was, but now just west of the main runway.	WWII
1591427	MMK8030	A small enclosure with a marked elongated approach, reminiscent of a banjo enclosure, is visible as cropmarks on aerial photographs taken in 2011. The approach, defined by parallel ditches, appears to terminate on or close to a linear ditch.	Prehistoric
1591428	MMK8049	A sub-circular enclosure of probable Iron Age or Roman date is visible as cropmarks on aerial photographs. Located at a field boundary about 550 metres S of Northey Farm, a sub-square enclosure ditch up to 2.3 metres wide has rounded corners, a linear SE	Iron Age Roman
1591429	MMK8112	A small D-shaped enclosure plus linear ditches are visible as cropmarks on aerial photographs. Located at a field boundary about 283 metres ENE of Barslay Spinney, a ditch up to 2.5 metres wide encloses an area about 27.5 x 16 metres at its widest. A med	Unknown
1591430	MMK8011	An enclosure and possible trackway of probable Iron Age or Roman date is visible as cropmarks on aerial photographs. Bisected by the A509 immediately south and east of Barslay Spinne, the features are fragmented, but on the east side of the road comprise	Iron Age Roman

1609687	MMK8028	Two blocks of Medieval and/or Post Medieval ridge and furrow, are visible aerial photographs as cropmarks located east of Barsley Spinney.	Medieval
1621571	MNN173054	Cropmarks of a sub-rectangular ditch-defined enclosure of uncertain date, possibly later prehistoric, visible on aerial photographs taken in 2013 by English Heritage as part of the Reconnaissance Recording Programme.	Iron Age Roman

HER ID	NRHE ID	Name
HER/NRHE 'event' records		
ENN100252	-	Metal Detecting, 1999
ENN100262	-	Metal Detecting, 1999
ENN100358	-	Northampton South Trunk Main (field 1), 1991 (Fieldwalking)
ENN100423	-	Metal Detecting, 1999
ENN10048	-	Easton Maudit, Sites 9, 11, 13, 14 & 15
ENN100491	-	Sywell Aerodrome, 2000 (Geophysical survey)
ENN100492	-	Sywell Aerodrome Runway Enhancements, 2000 (Trial trench)
ENN100569	-	Finds, 1970
ENN101373	-	Sywell Wood, 2001
ENN101386	-	Sywell Aerodrome (Defence of Britain) 2001 (Measured survey)
ENN101426	-	Northampton South Trunk Main (field 3), 1991 (Fieldwalking survey)
ENN101427	-	Northampton South Trunk Main (field 2), 1991 (Fieldwalking)
ENN102337	-	Listed Buildings Survey
ENN102371	-	Listed Buildings Survey, 1985
ENN102956	-	Listed Buildings Survey, 1987
ENN103157	-	Earls Barton Quarry western extension, 2002 (Fieldwalking survey)
ENN103382	-	Earls Barton Quarry Western Extension, 2002 (Geophysical survey)
ENN103449	-	Clay Hills Searchlight Site (Defence of Britain Survey), 2003
ENN103910	-	Northamptonshire Watermills Survey, 2001-2002
ENN103918	1493339	Air Photo Interpretation, 2005
ENN103937	-	Midland Open Fields Project, 1995-99
ENN103941	-	Holcot 'Enclosure', Air Photo Interpretation, Pre 2005
ENN103970	-	Land west of New College Farm, 2005 (Trial trench)
ENN104057	-	English Heritage Parks Register Enhancement Survey, 1995
ENN104334	1511807	Sywell Aerodrome Runway, 2007 (Observation)
ENN105343	-	Empingham to Hannington Pipeline, 2006 (DBA)
ENN105483	-	Salcey Forest and Yardley Chase, 2007 (DBA)
ENN105570	-	Earls Barton Quarry western extension, 2002 (Desk-based assessment)
ENN107106	-	Hannington to Pitsford Pipeline, 2013-14 (Geophysical survey)
ENN107316	-	Sywell Wood Woodland Survey, 2000
ENN107317	-	Hardwick Wood Woodland Survey, 2000 (Measured survey)
ENN107372	1608941	Spinney Quarry Phase 1B, 2014 (Trial trench)
ENN107718	1619440	Hannington Lane, 2014 (Geophysical survey)
ENN107822	-	Land at the proposed White Mills Marina, 2013 (Desk Based Assessment)
ENN107823	1611061	Land to The Rear of 1-27 Thorpe Road, 2013 (Geophysics)
ENN108116	1470606	Wellingborough Road, Sywell, 2014 (Trial trench)

ENN108117	-	Wellingborough Road, Sywell, 2013-4 (Geophysical survey)
ENN108351	-	Spinney Quarry (Breedon) 2016 (Trial trench)
ENN108357	-	Station Road, Earls Barton, 2016 (Trial trench)
ENN108391	-	Compton Way, Earls Barton 2014 (Watching Brief)
ENN108392	-	Compton Way 2013 (Trial Trenching)
ENN108393	-	Compton Way 2012 (Geophysical survey)
ENN108988	-	Glebe Barn, 2006 (Building survey)
ENN109633	-	White's Nurseries, 2019 (Trial trenching)
ENN109783	-	Grendon, 1985 (Fieldwalking)
ENN109853	-	Easton Maudit village survey
ENN109956	-	Overstone Leys Easement, 2020 (Geophysical survey)
ENN109986	-	Overstone Leys, 2021 (Trial trench)
ENN110132	-	Pastures Farm, 2017 (Observation)
ENN111157	-	White Mills Marina, 2014 (Trial trench)
ENN111158	-	White Mills Marina, 2015 (Excavation)
ENN111159	-	White Mills Marina, 2014 (Geophysical survey)
ENN12711	-	Northamptonshire Ridge & Furrow Survey, Pre 1993
ENN12857	-	Recce Field Survey
ENN12910	-	Earls Barton & Ecton (Possible Quarrying Land), 1991 (Walkover survey)
ENN18984	-	Field Survey, Pre 1994
ENN19049	-	DEFENCE OF BRITAIN PROJECT
ENN8801	-	Fieldwalking, 1974/5
ENN8802	-	Fieldwalking, 1975
ENN9027	-	Aerial survey, undated
ENN9028	-	Moat Close, documentary
ENN9029	-	Aerial survey, undated
ENN9185	-	Earthwork Survey, Undated
ENN9187	-	Hamfordshoe Hundred Moot
ENN9188	-	
ENN9312	-	Earls Barton, (Pytchley-Northampton), 1966 (Watching brief)
ENN9313	-	Ploughing, 1977
ENN9314	642158	Clay Lane, 1980 (Excavation)
ENN9462	-	Aerial survey, undated
ENN9464	-	Fieldwalking, Pre 1978
ENN9466	-	Aerial survey, 1970
ENN9467	-	Northampton-Wellingborough Expressway (Field 22), 1971-72
ENN9468	-	Aerial Survey, Pre 1972
ENN9469	-	Aerial survey, 1970
ENN9470	-	Earls Barton Gravel Quarrying, 1904-13
ENN9471	-	Fieldwalking, 1978
ENN9472	-	Aerial survey, 1970
ENN9473	-	Aerial survey, pre 1979
ENN9474	-	Drain works, 1970
ENN9487	-	Earls Barton, pre 1900 (Observation)
ENN9494	-	Land north of Brookhill Farm, 1975 (Fieldwalking)
ENN9498	-	Mears Ashby, Fieldwalking (pre 1982)
ENN9499	-	Fieldwalking, 1975
ENN9503	-	Land north-east of Sandpit Barn, 1973 (Watching brief)
ENN9506	-	Fieldwalking, Undated
ENN9507	-	Observation, 1966
ENN9508	-	Mears Ashby, 1974 (Fieldwalking)
ENN9608	642155	Earls Barton, Site 16, Pre 1979
ENN9610	-	Barton Thorpe Field 46, 1977-78 (Fieldwalking)

ENN9611	-	Fieldwalking, Undated
ENN9616	-	Field 80, 1975
ENN9619	-	Land north-west of Springhill, 1975 (Fieldwalking)
ENN9620	-	Aerial Survey, 1984
ENN9791	-	Fieldwalking, 1966
ENN9807	-	Grendon, Site 15
ENN9831	-	Aerial Survey, 1964
-	642155	EXCAVATION
-	1470606	WATCHING BRIEF
-	1493339	EVALUATION
-	642158	EXCAVATION
-	1611061	GEOPHYSICAL SURVEY
-	1619440	GEOPHYSICAL SURVEY
-	1511807	WATCHING BRIEF
-	1608941	EXCAVATION

